

MacKay-Lyons Sweetapple Architects Limited

Mission

Ghost research lab is an educational initiative designed to promote the transfer of architectural knowledge through direct experience, project based learning taught in the master builder tradition, with an emphasis on issues of landscape, material culture and community.



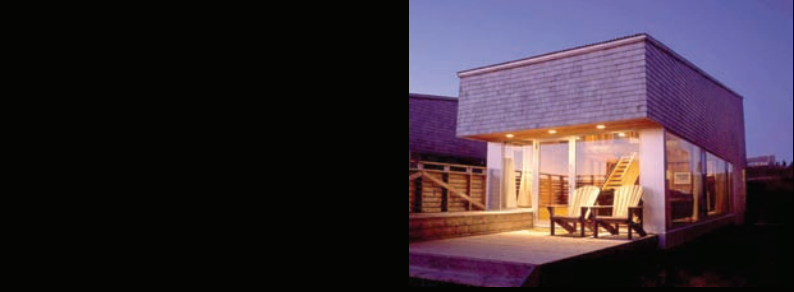
Programs

Ghost Lab provides a two-week summer design/build internship for architects, professors and students, directed by Brian MacKay-Lyons, Architect. The program takes place each summer on the coast of Nova Scotia, atop the stone ruins of a nearly 400 year old village on the MacKay-Lyons farm. The projects consist of a one-week design phase and a one-week construction phase. Projects are seen as didactic instruments to interpret cultural ecology and build on

both the research experience of Mackay-Lyons Sweetapple Architects and the framing and shipbuilding traditions of the area. At the session's conclusion, the completed structures serve as the venue for a community gathering, featuring local musicians who help interpret the cultural of site.

Ghost

"Imagine flying over the bones of a ghost village on the edge of the world" - Brian MacKay-Lyons
June 30 to July 14, 2007



Guests

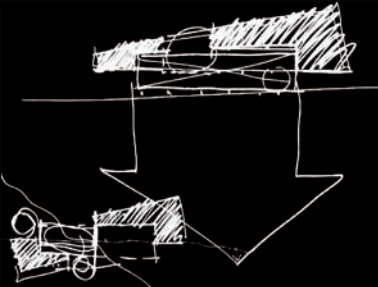
International leaders in architectural theory, practice, and craft attend and contribute annually.

Journals / Publications

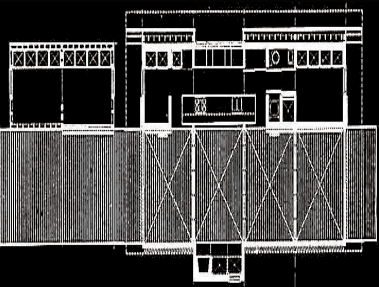
Each project is published and contributes to the discourse established with affiliated institutions and professionals and are intended to form chapters in a book entitled "Ten Ghosts." Ghost Lab has also received international recognition in the design press.



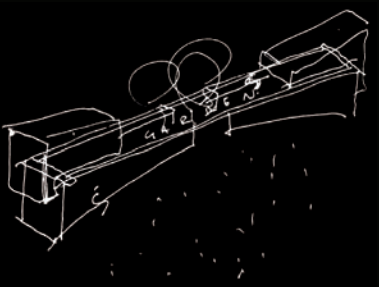
MacKay-Lyons Sweetapple Architects Limited



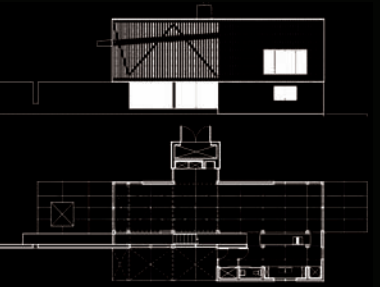
Messenger House II
This house occupies the ridge of a Lunenburg county drumlin (glacial hilltop) which runs perpendicular to the southwest axis of Nova Scotia's south shore. This project represents an ongoing search for the quality of 'plainness' found in vernacular platform construction.



Danielson Cottage
This house is a project, built with a very tight budget for a meteorologist and a landscape architect. Located on a cliff edge on the tip of Cape Breton Island, it looks across Aspy Bay, to Cape North, the North Star, and on a clear day to Newfoundland.



Hill House
This house is one of a series of recent, related projects on the drumlin headlands of Nova Scotia's south shore. As it implies, the Hill House occupies the crown of a drumlin, it enjoys a 360 degree view over both the outer ocean and the landscape.



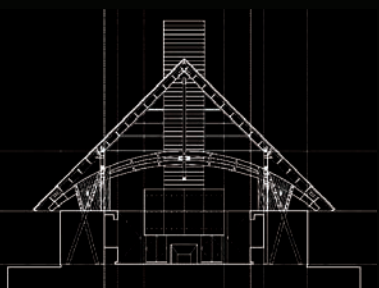
House on Nova Scotia Coast # 22
This house is located at the point where the LaHave River meets the sea. A pair of lantern-like buildings appear to float above two hilltops; one overlooks the river estuary & the other ocean; contains the main house & the other guest house.

Projects

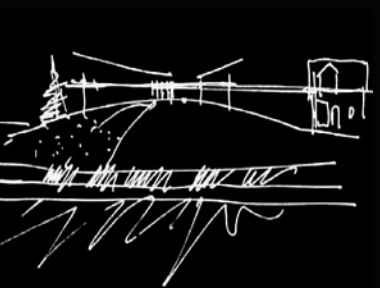
Mackay-Lyons is an architect whose practice, Mackay-Lyons Sweetapple (MLS) has been rapidly expanding throughout the past decade. His visually striking, aesthetically simple, modernist buildings, built in equally striking locations

throughout the Canadian Maritime Provinces, have brought attention from many far-flung parts of the world. Indeed, Kenneth Frampton, eminece grise among architecture's critical regionalists, sees Mackay-Lyons' work as key

to the renewed debate regarding critical regionalism. If Mackay-Lyons is ambivalent about this tag, he's certainly helped bring a cool, hip gloss to the regionalist debate, upended in the wake of the big architecture juggernaut.



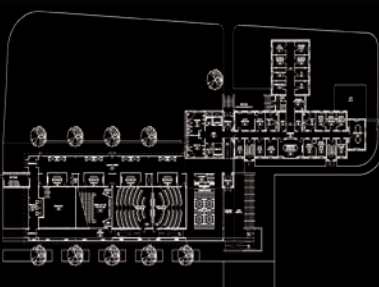
Agnew House
the Agnew house is located on a protected cove on Nova Scotia's Atlantic coast. It sits on a narrow shale ridge, surrounded by mature pine and spruce trees. The scheme employs the typology of an English barn with double shed additions.



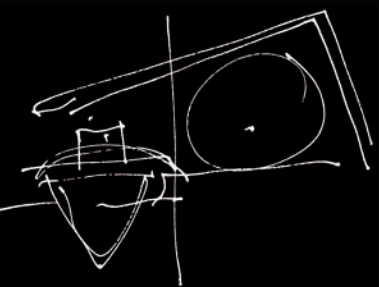
Howard House
This house of approximately 2000 square feet, designed for a young family, is an example of an affordable metal box. It represents the findings from a particular avenue of design research. The house creates a 12'-0" wide, 110'-0" long wall in the landscape.



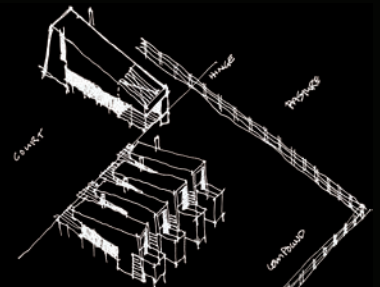
Academic Resource Centre University of Tronto
Located at the heart of John Andrews brutalist Scarborough campus. The new building is envisioned as a 'town square' or 'intellectual heart' for the University.



UPEI School of Business Administration
Location: Charlottetown, PEI
Addition: 27,000 SF
Renovation: 20,000 SF
Completion date: 2007



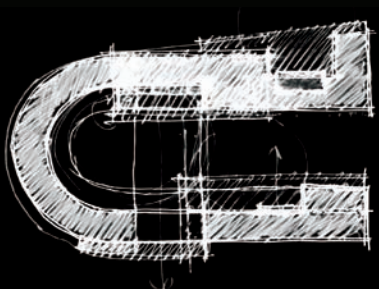
Ship's Company Theatre
For 20 years, Ship's Company sustained itself as a summer theatre in remote community of Parrsboro, NS. the project is built on tidal mudflats 40' deep.



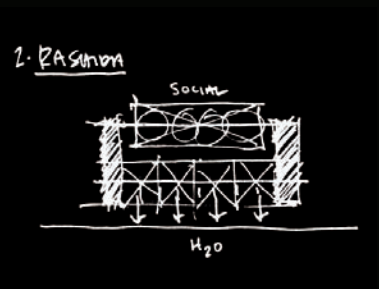
Ghost House #7 2005
Projects are seen as didactic instruments to interpret cultural ecology & build on both the research experience of MLS Architects & the framing & ship building traditions of the area.



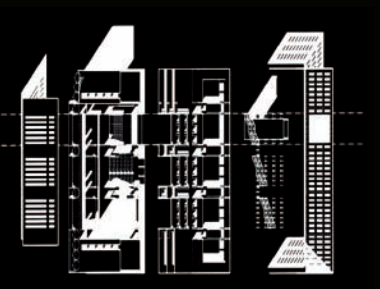
New Office MLS Architect
The new office is part of a larger mixed used infill project. The thru-block site has been subdivided to allow for the addition of four townhouses. Presents facade on Halifax's toughest street, has not seen any significant private-sector.



Canadian Embassy Bangladesh
The complex includes for Immigration, Trade & investment, & our political & Economic Advisory & residence. Goals of the project involve creating, insulation & reinforcing a spirit of collegiality among embassy staff, visitors.



NSCAD Port Campus
The Halifax Port Authority says it is looking forward to the grand opening of the NSCAD campus in the spring of 2007. NSCAD University is Canada's premier university dedicated to advancing the visual arts through education, research and production.



Computer Science Dalhousie University
Location: Halifax, Nova Scotia
Building size: 65,000 SF
Completion date: 1999

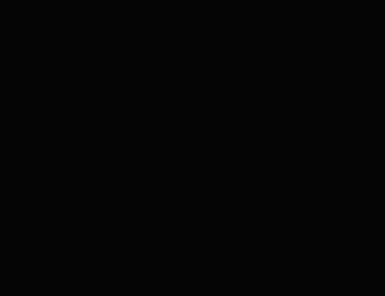
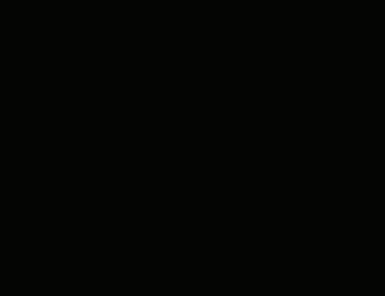
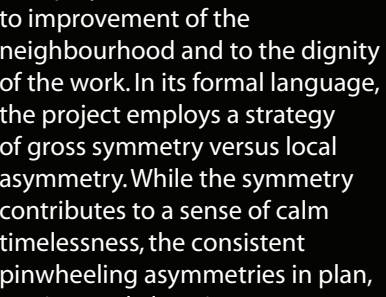
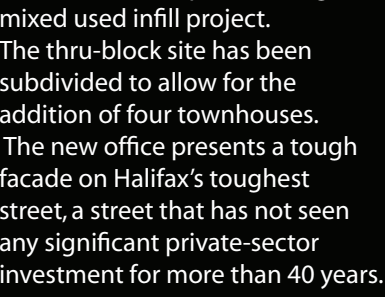
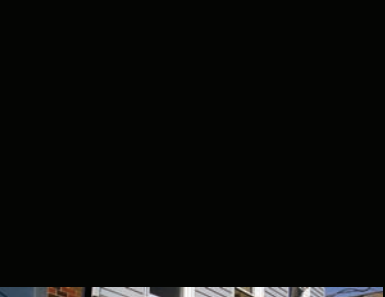
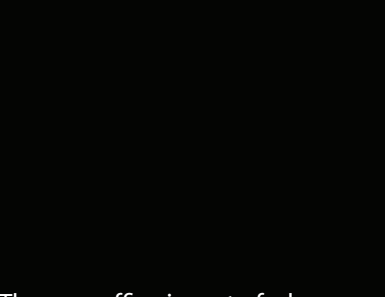
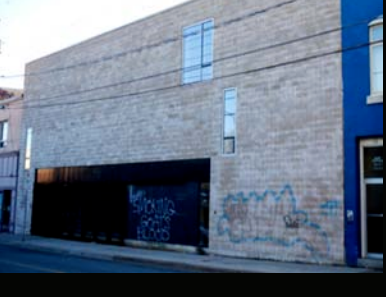
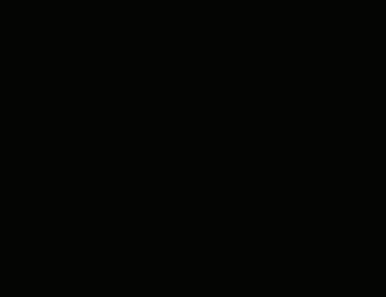
MacKay-Lyons Sweetapple Architects Limited



Neighbourhood

MacKay-Lyons Sweetapple Architects Limited is a Halifax-based firm offering architectural and urban design services to residential and institutional clients in Canada and abroad. The firm was originally founded in 1985 by Brian MacKay-Lyons (FRAIC, Hon. FAIA, RCA) who

formed a partnership with Talbot Sweetapple (MRAIC) in 2005. We are a medium-sized firm consisting of architects, intern architects and administrative personnel whose members are registered to practice in various Canadian Provinces and the United States.



The new office is part of a larger mixed used infill project. The thru-block site has been subdivided to allow for the addition of four townhouses. The new office presents a tough facade on Halifax's toughest street, a street that has not seen any significant private-sector investment for more than 40 years.

The idealism represented by the project at the urban scale is consistent with its utopian attitude toward the program. Historian Sir Malcolm Quantrill has described the project as a "temple of work."

This project is committed to improvement of the neighbourhood and to the dignity of the work. In its formal language, the project employs a strategy of gross symmetry versus local asymmetry. While the symmetry contributes to a sense of calm timelessness, the consistent pinwheeling asymmetries in plan, section, and elevation create a kinetic effect for the eye and for the body.